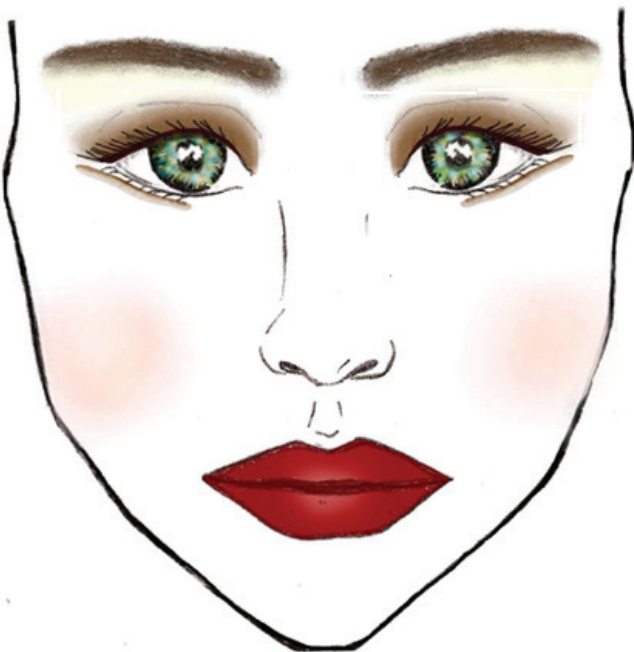
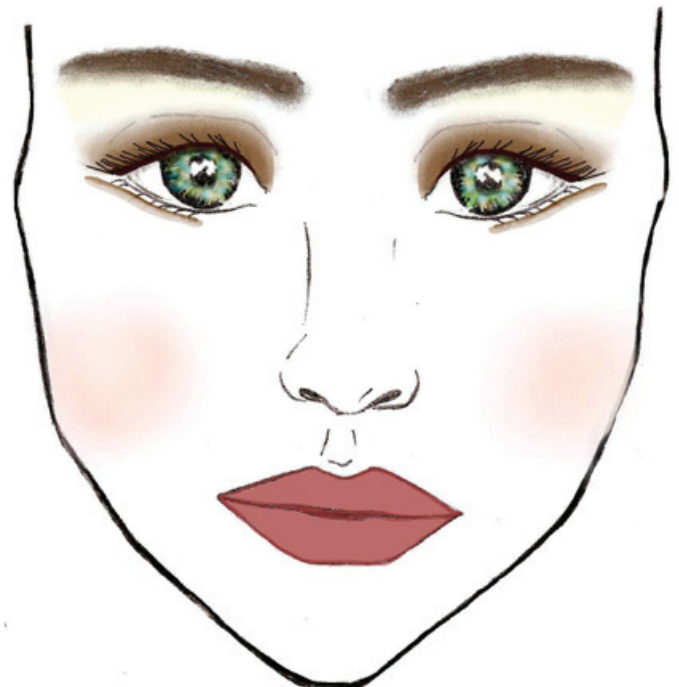


# EASY RECITAL MAKEUP LOOKS



JAMglam  
Recital Look

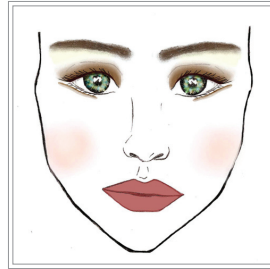
Young Dancer  
Recital Look



## EASY RECITAL MAKEUP LOOKS



JAMglam  
Recital Look



Young Dancer  
Recital Look

NOTE: Both of these looks are easy to apply and are identical except for the lip color. The Young Dancer How-to video features the Wild Child "rose" Mineral Lipstick which can easily be replaced with the Fierce "red" Mineral Lipstick, if you choose, for that JAMglam Recital look.

For this look, you will need one of the following kits:

### 1) Young Dancer Petite Makeup Kit

(Wild Child "rose" Mineral Lipstick included in kit) - \$35.00

### 2) JAMglam Recital Palette

(Fierce "red" Mineral Lipstick included in palette) - \$25.00

**Other optional JAM cosmetics items:** Dual Mineral Powder Foundation, Chocolate Eye Liner Pencil, White Highlighter Eye Pencil, Warm Brandy Lip Pencil (to go with Fierce Mineral Lipstick), Pink Mauve Lip Pencil (to go with Wild Child Mineral Lipstick), BLACK Water-resistant Mascara, 7 pc brush kit

### 1) Skin

- Make sure face is clean, moisturized, and dry
- Using sponge, smooth Dual Mineral Powder Foundation (dry or wet) over entire face, eyelids, and under eye area. Blend into neck.
- TIP: Dual Mineral Powder Foundation – wet application – more opaque, dry application – more sheer

### 2) Eyebrows

- With a brow comb, shape brows
- With a thin, angled eyeliner/brow brush, draw a thin line in CENTER of eyebrows with "Fear Me" brown eye shadow. Use brow brush to smooth out line and disperse color through rest of brow.
- TIP: Fuller, more natural-looking brow = youthful look. Darker, thinner, more defined brow = mature look.

### 3) Eyes

- With an eye shadow brush, highlight brow bone and inner corner of eye with "Innocent Me" shimmery white eye shadow. Use white shadow with a wet/damp make up brush or q-tip to achieve a more intense highlight.
- Apply "Fear Me" brown eye shadow darkest at the lash line gradually fading up to highlighted brow bone.
- Apply "Fear Me" brown eye shadow LIGHTLY under lower lashes from the middle of the lash line out past the corner of the eye. Do NOT line from inner corner of eye out.
- Use JAM white highlighter eye pencil in between upper lash line and lower lash liner.
- Apply JAM BLACK water-resistant mascara - dancers 7 yrs and up
- TIP: JAM cosmetics mineral colors are highly pigmented and very buildable. The more you apply, the darker the color gets. Always start with less color and add more – it is easier to ADD then to SUBTRACT when it comes to makeup. Use a wet/damp makeup brush when applying JAM cosmetics colors on darker skin tones.

### 4) Cheeks

- With a blush brush, apply "Superstar" blush starting at hairline and pulling color forward to apples of the cheeks.
- With a large powder brush, smooth Dual Mineral Powder Foundation over cheeks and face to blend.
- TIP: Remember, it's easier to ADD than to SUBTRACT, so start out lightly. Avoid "clown circles" on cheeks! Do not let cheek color drop below lip line.

### 5) Lips

#### For the Young Dancer Look–

- Line lips and fill in with Pink Mauve Lip Liner
- Apply Wild Child "rose" Mineral Lipstick

#### For the JAMglam Recital Look –

- Line lips and fill in with Warm Brandy Lip Liner
- Apply Fierce "red" Mineral Lipstick (included in palette)

- Don't forget to use these instructions to follow along with the Young Dancer How-to Video.
- Get your FREE copy of **"THE FACTS ABOUT STAGE MAKEUP: what EVERY dancer should know"**, a comprehensive list of performance makeup questions ANSWERED!!!
- Check out Jessica's blog at: [www.dancemakeupblog.com](http://www.dancemakeupblog.com) for performance makeup tips, tricks, and new products!